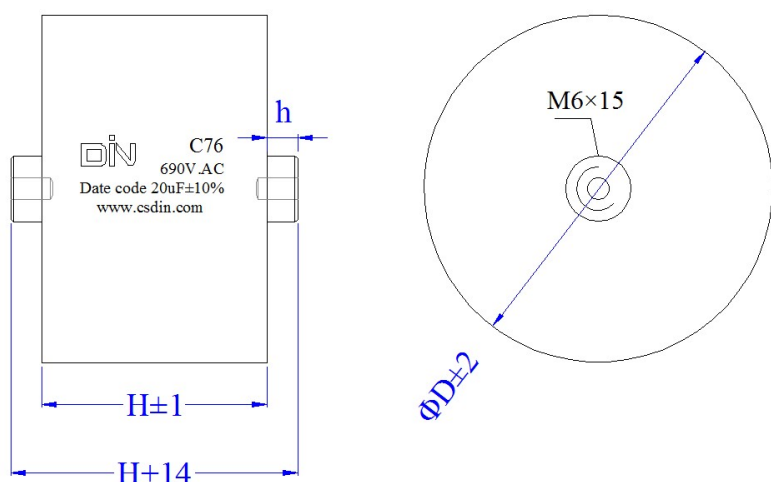
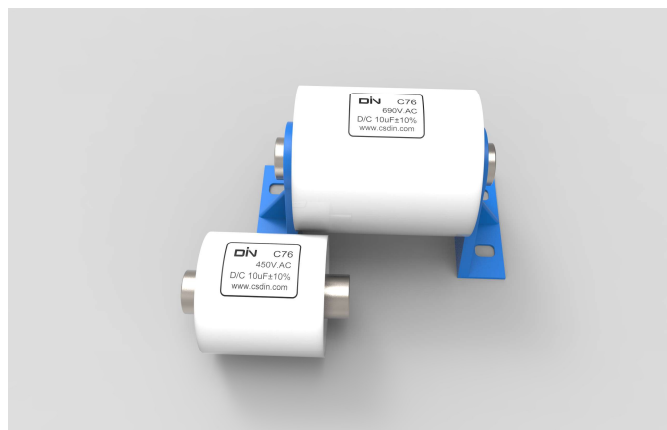


## C76 系列 SERIES

### ■ 外形图 Outline Drawing



### ■ 特点

- 高纹波电流，高 dv/dt 承受能力
- 耐压高，具有自愈性
- 容量大，体积小

### ■ 主要用途

- 广泛应用于各类电源、逆变器、感应加热等设备，与功率输出变压器初级做串联连接，做耦合隔直作用

### ■ Features

- High ripple current, high dv/dt withstand capability
- Resistance to high voltage, with self-healing
- Large capacity, small size

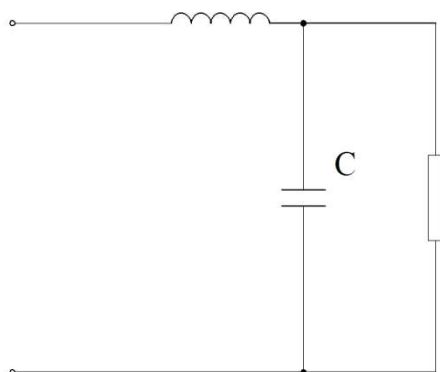
### ■ Typical application

- Widely used in all kinds of power supply, inverter, such as induction heating equipment. Series connection with power output transformer primary for coupling and blocking

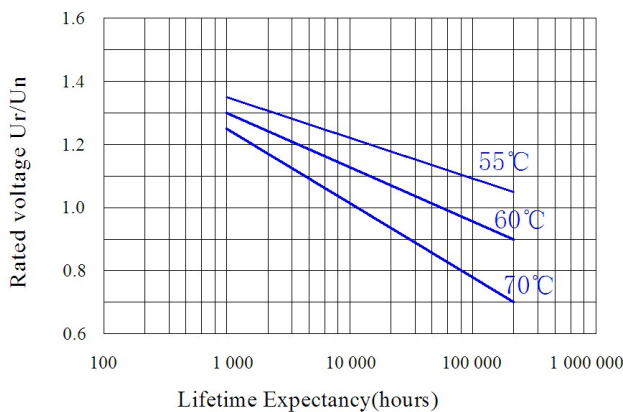
■ 技术参数 Technical Specifications

项目 Items	性能要求 Characteristics	
引用标准/Reference standards	GB/T 17702 IEC 61071	
容量范围/Capacitance	5 $\mu$ F ~50 $\mu$ F	
额定电压/Rated Voltage	450V.AC,690V.AC	
容量偏差/Tolerance	$\pm$ 5%	
损耗角正切/Dissipation factor	$\text{tg}\delta \leq 20 \times 10^{-4}$ at 25 $^{\circ}$ C $\pm$ 5 $^{\circ}$ C,1KHz	
绝缘电阻/Insulation resistance	C·R $\geq$ 5000S,at 100V.DC,25 $^{\circ}$ C $\pm$ 5 $^{\circ}$ C,60s	
工作温度范围/Operating temperature range	-40 $^{\circ}$ C~85 $^{\circ}$ C	
极间耐电压/Test voltage between terminals	1.5Un (10S,25 $^{\circ}$ C $\pm$ 5 $^{\circ}$ C)	
极壳耐电压/Test voltage between terminals and case	3000V.AC(10S,50/60Hz,25 $^{\circ}$ C $\pm$ 5 $^{\circ}$ C)	
过电压/Over voltage	1.1 Un	30% of the service period
	1.15 Un	30 min/day
	1.2 Un	5 min/day
	1.3 Un	1min/day
	1.5 Un	100ms no more than 1000 times
最大安装扭矩/ Max. Torque of Installation	3.0Nm	
最大电极扭矩/Max. Torque of terminals	M6:3.5Nm	M8:6.0Nm
最高使用海拔/Max. Torque of terminals	2000m	
预期寿命/Expected lifetime	100 000hrs @ Un, $\theta$ hs=70 $^{\circ}$ C	
失效率/Failure rate	100FIT	

■ 典型线路/Typical circuit



■ 预期寿命曲线/ Expected lifetime curve



■ 产品编码说明/Part number code system

▲ 18 位产品代码如下:

▲ The 18 digits part number is formed as follow:

C	7	6															
1	2	3	4	5	6	7	8	9	10	11	12	13	14	15	16	17	18

1~3 位: 型号代码

Digit 1~3: Series code

4~6 位: 标称容量

Digit 4~6: Rated capacitance value

如: 104=10×10<sup>4</sup>PF=0.1uF

Example: 104=10×10<sup>4</sup>PF=0.1uF

7~10 位: 内部特征码

Digit 7~10: Internal use

11 位: 容量偏差

Digit 11: Capacitance tolerance

J=±5%、K=±10%、M=±20%

J=±5%、K=±10%、M=±20%

12~13 位: 额定电压

Digit 12~13: Rated voltage

X2=450VAC、62=690VAC

X2=450VAC、62=690VAC

14~15 位: 外形尺寸代码

Digit 14~15: Dimension code

14位 Digit 14		15位 Digit 15	
代码 Code	胶带宽 Tape width	代码 Code	引出端规格 Specifications of terminals
E	40mm	B	螺母M6*15*10
G	50mm	C	螺母M8*15*10
I	60mm		

16~17位: h高度

16~17位: Height for h

70=7.0mm 75=7.5mm ...

70=7.0mm 75=7.5mm ...

18 位: 安装形式

Digit18: Fix style

代码 Code	N	B	C
支架 Bracket	无支架	Φ15*49	Φ15*58

■ 标准品一览表 Standard size

静电容量 Cap(uF)	Outline size (mm)			ESR @100KHZ (A)	Ls (nH)	dv/dt (V/us)	î (A)	Irms @25°C/100KHZ (A)	Part number
	ΦD (mm)	L (mm)	L1 (mm)						
Un: 450V.AC									
6.8	35	40	54	9.4	27	100	680	30	C76685****□X2E*70○
8	38	“	“	8.0	25	80	640	35	C76805****□X2E*70○
10	42	“	“	6.4	“	75	750	40	C76106****□X2E*70○
15	51	“	“	5.3	28	70	1050	48	C76156****□X2E*70○
20	59	“	“	4.0	23	65	1300	55	C76206****□X2E*70○
30	71	“	“	2.7	27	60	1800	68	C76306****□X2E*70○
40	74	50	64	2.0	26	55	2200	70	C76406****□X2G*70○
50	82	“	“	1.6	25	50	2500	75	C76506****□X2G*70○
Un: 690V.AC									
5	35	60	74	9.6	27	180	900	30	C76505****□62I*70○
6.8	40	“	“	7.0	26	150	1020	35	C76685****□62I*70○
8	44	“	“	7.0	25	120	960	38	C76805****□62I*70○
10	49	“	“	6.4	26	110	1100	45	C76106****□62I*70○
15	59	“	“	4.2	23	100	1500	55	C76156****□62I*70○
20	68	“	“	3.2	25	90	1800	62	C76206****□62I*70○
25	76	“	“	2.5	22	80	2000	70	C76256****□62I*70○
30	83	“	“	2.1	23	80	2400	75	C76306****□62I*70○

◇ 备注：特殊需要可根据客户要求另行设计

◇ Note: Special requirements can be designed according to customer requirements