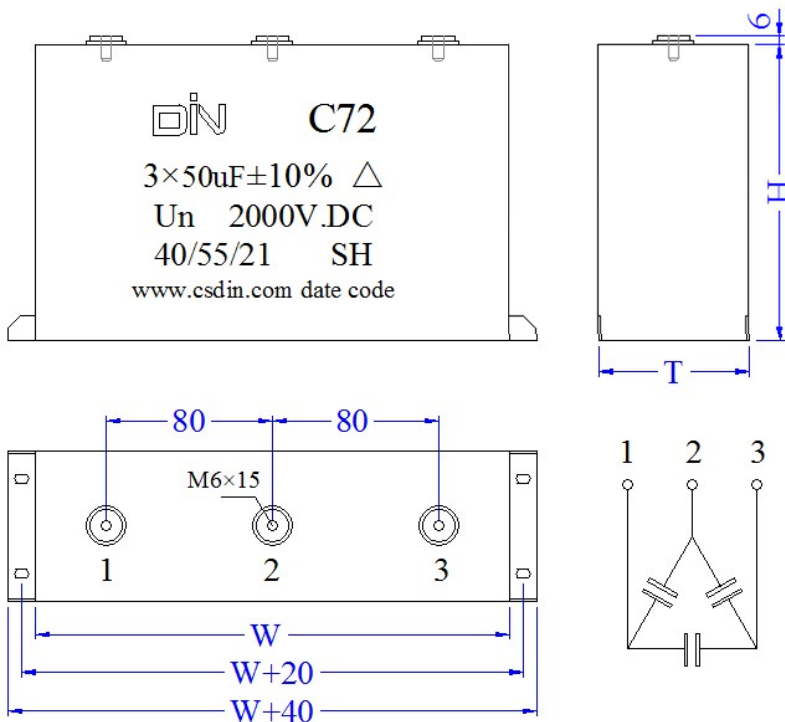


## C72 系列 SERIES

### ■ 外形图 Outline Drawing



### ■ 特点

- 高纹波电流，高 dv/dt 承受能力
- 耐压高，具有自愈性
- 容量大、体积小

### ■ 主要用途

● 在大功率UPS，开关电源，变频器等设备中作交流滤波，治理谐波及提高功率因数。

### ■ Features

- High ripple current, high dv/dt withstand capability
- Resistance to high voltage, with self-healing
- Large capacity, small size

### ■ Typical application

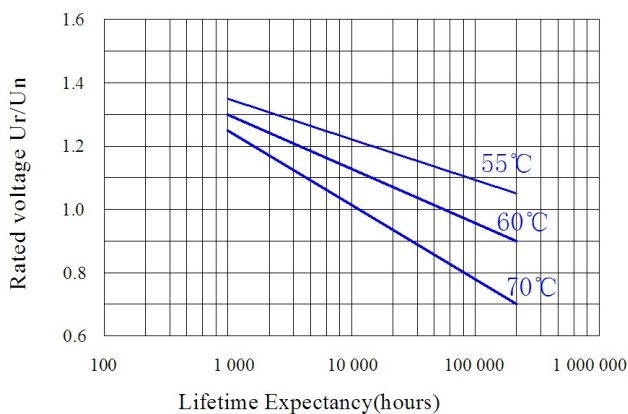
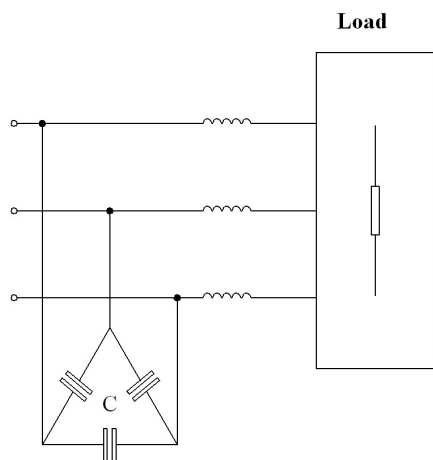
● In the high-power UPS, switching power supply, inverter and other equipment for the AC filter, harmonics and improve power factor control;

■ 技术参数 Technical Specifications

项目 Items	性能要求 Characteristics	
引用标准/Reference standards	GB/T 17702 IEC 61071	
容量范围/Capacitance	3×40μF ~3×500μF	
额定电压/Rated Voltage	400V.AC~1140V.AC 50/60HZ	
容量偏差/Tolerance	±5%	
损耗角正切/Dissipation factor	tgδ≤20×10 <sup>-4</sup> at 25°C±5°C,100Hz	
绝缘电阻/Insulation resistance	(内置放电电阻)Measuring	
工作温度范围/Operating temperature range	-40°C~85°C	
极间耐电压/Test voltage between terminals	1.5Un (10S,25°C±5°C)	
极壳耐电压/Test voltage between terminals and case	3000V.AC(10S,50/60Hz,25°C±5°C)	
过电压/Over voltage	1.1 Un	8 hrs/day
	1.15 Un	30 min/day
	1.2 Un	5 min/day for 1min during life 200 times
	1.3 Un	1min/day for 1min during life 200 times
最大安装扭矩/ Max. Torque of Installation	10Nm	
最大电极扭矩/Max. Torque of terminals	M6:3.0Nm	
最高使用海拔/Max Altitude	2000m	
预期寿命/Expected lifetime	ΔC/C ≤3% after 100 000hrs under rated conditions @ 50°C	

■ 典型线路/Typical circuit

■ 预期寿命曲线/ Expected lifetime curve



■ 产品编码说明/Part number code system

▲ 18位产品代码如下:

▲ The 18 digits part number is formed as follow:

C	7	2															
1	2	3	4	5	6	7	8	9	10	11	12	13	14	15	16	17	18

1~3位: 型号代码

Digit 1~3: Series code

4~6位: 标称容量

Digit 4~6: Rated capacitance value

如: 104=10×10<sup>4</sup>PF=0.1uF

Example: 104=10×10<sup>4</sup>PF=0.1uF

7~10位: 内部特征码

Digit 7~10: Internal use

11位: 容量偏差

Digit 11: Capacitance tolerance

J=±5%、K=±10%、M=±20%

J=±5%、K=±10%、M=±20%

12~13位: 额定均方根电压

Digit 12~13: Rated RMS voltage

Y2=500VAC、62=690VAC

Y2=500VAC、62=690VAC

14位: 连接方式

Digit 14: Connection mode

A=三角形、B=Y形

A=△、B=Y

15~17位: 引出端代码

Digit 15~17: Terminal code

15位 Digit 15		16位 Digit 16		17位 Digit 17	
代码 Code	引出端规格 Specifications of terminals	代码 Code	引出端数量 Number of terminals	代码 Code	脚距 Pitch
B	螺母M6*15*10	2	2	8	80mm
C	螺母M8*15*10	3	3	9	90mm
E	螺杆M6*15*20	4	4	A	120mm
F	螺杆M8*15*20	...	...	B	150mm
G	螺杆M12*15*20				

18位: 外壳材质

Digit 18: Shell material

S=不锈钢外壳、I=铁外壳

S= Stainless steel、I= Iron

■ 标准品一览表 Standard size

静电容量 Cap(uF)	Outline size (mm)			Imax (A)	50HZ		60HZ		Weight (kg)	Part number
	W	H	T		Output (kvar)	In (A)	Output (kvar)	In (A)		
Urms: 500V.AC										
50×3	230	169	71	21×3	11.7	13.6×3	14.1	16.2×3	3.0	C72506****□Y2A*△—S
66×3	“	200	“	28×3	15.5	17.9×3	18.7	21.5×3	3.5	C72666****□Y2A*△—S
75×3	“	210	“	28×3	17.6	20.4×3	21.2	24.5×3	“	C72756****□Y2A*△—S
Urms: 690V.AC										
15×3	230	169	71	10×3	6.7	5.6×3	8.0	6.7×3	3.0	C72156****□62A*△—S
20×3	“	200	“	14×3	8.9	7.5×3	10.7	9.0×3	3.5	C72206****□Y2A*△—S
22×3	“	210	“	15×3	9.8	8.2×3	11.8	9.9×3	“	C72226****□Y2A*△—S

◇ 备注：特殊需要可根据客户要求另行设计

◇ Note: Special requirements can be designed according to customer requirements

◇ 1.“\*\*\*\*”表示内部特征码；“\*\*\*\*”=Internal use

◇ 2.“□”表示容量偏差；“□”= Capacitance tolerance

◇ 3.“\*”表示引出端型体；“\*”= Specifications of terminals

◇ 4.“△”表示端子数量；“△”= Number of terminals

◇ 5.“—”表示脚距；“—”= Pitch